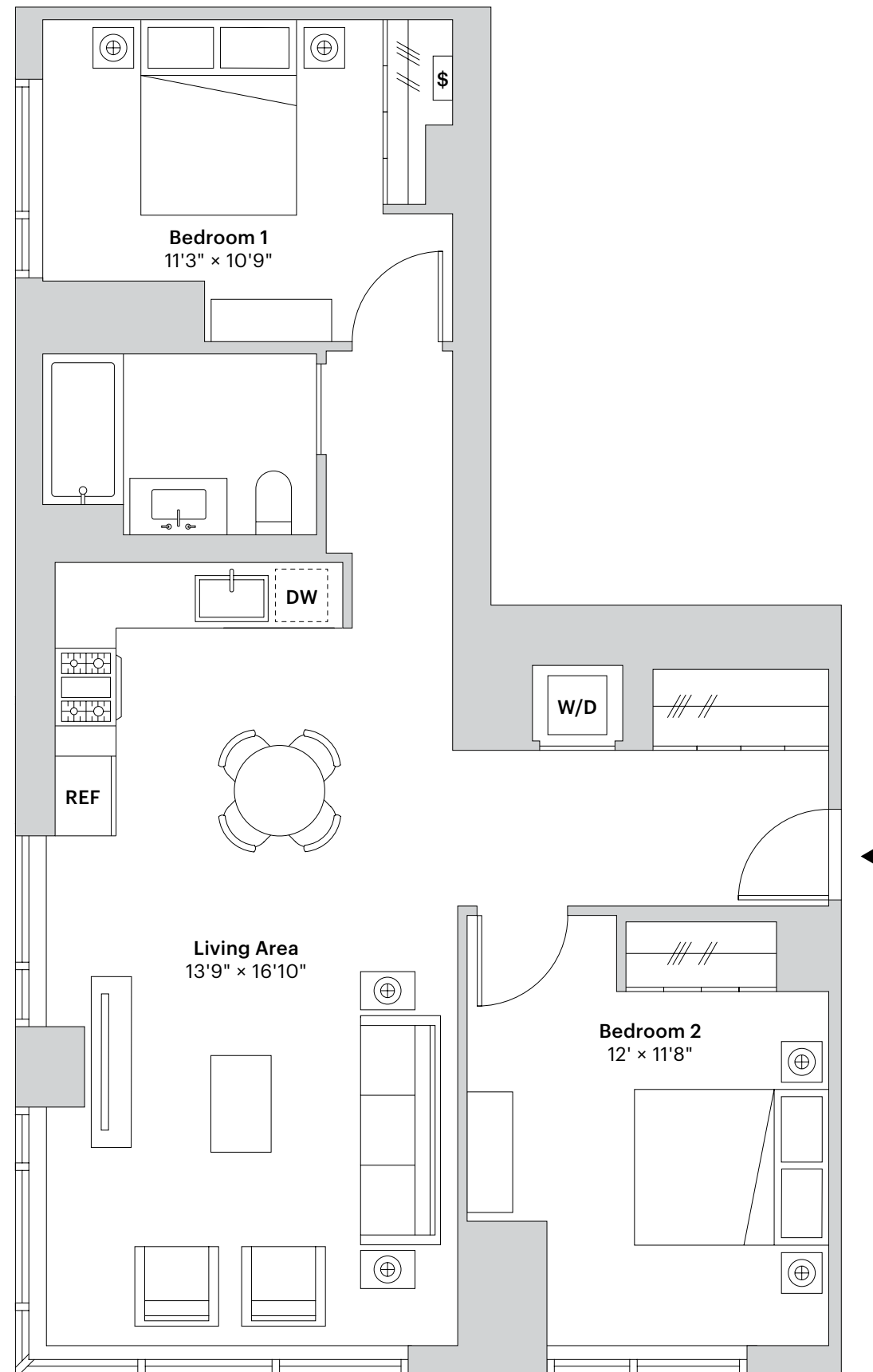


# 07

Floors 44-PH4

2 Bedrooms

1 Bathroom



# 3ELEVEN

## Residence Features

- Entry foyer
- Six-inch wide-plank white oak floors
- Solar shades in all major rooms
- In-residence washer and dryer
- Personal safe in all homes
- Individually controlled central heating and cooling
- Corner unit with two exposures
- Dining area
- Caesarstone countertop and backsplash
- Stainless steel counter-depth refrigerators with ice makers
- Stainless-steel gas range
- Bosch panelized dishwasher
- L-shaped kitchen with under cabinet lighting
- Bathroom custom vanities with Caesarstone countertops
- Bathroom full height custom medicine cabinets
- Full-height mirror and integral medicine lockboxes


## Amenities

- 30,000-square-feet of staffed and programmed interior amenities, and over 30,000-square-feet of outdoor amenities spread across four levels
- Outdoor pool surrounded by comfortable lounges, semi-private cabanas, and landscaping
- Over 5,000 square feet of fitness, aerobic, well-being and meditative spaces spread across multiple private and public areas
- Two separate roof decks, the 42nd floor Sky Terrace and Sky Lounge and 7th floor lounge and private cabanas
- Two outdoor dog runs and a professionally staffed full-service pet care facility

[3elevennyc.com](http://3elevennyc.com)

311 11th Avenue  
New York, NY 10001

[leasing@3elevennyc.com](mailto:leasing@3elevennyc.com)  
212 880 0311

All dimensions are approximate.  

 DOUGLASTON  
DEVELOPMENT

*Nancy Packer*  
SIGNATURE MARKETING SERVICES

