

04

Floors 40-41
2 Bedrooms
2 Bathrooms

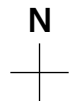
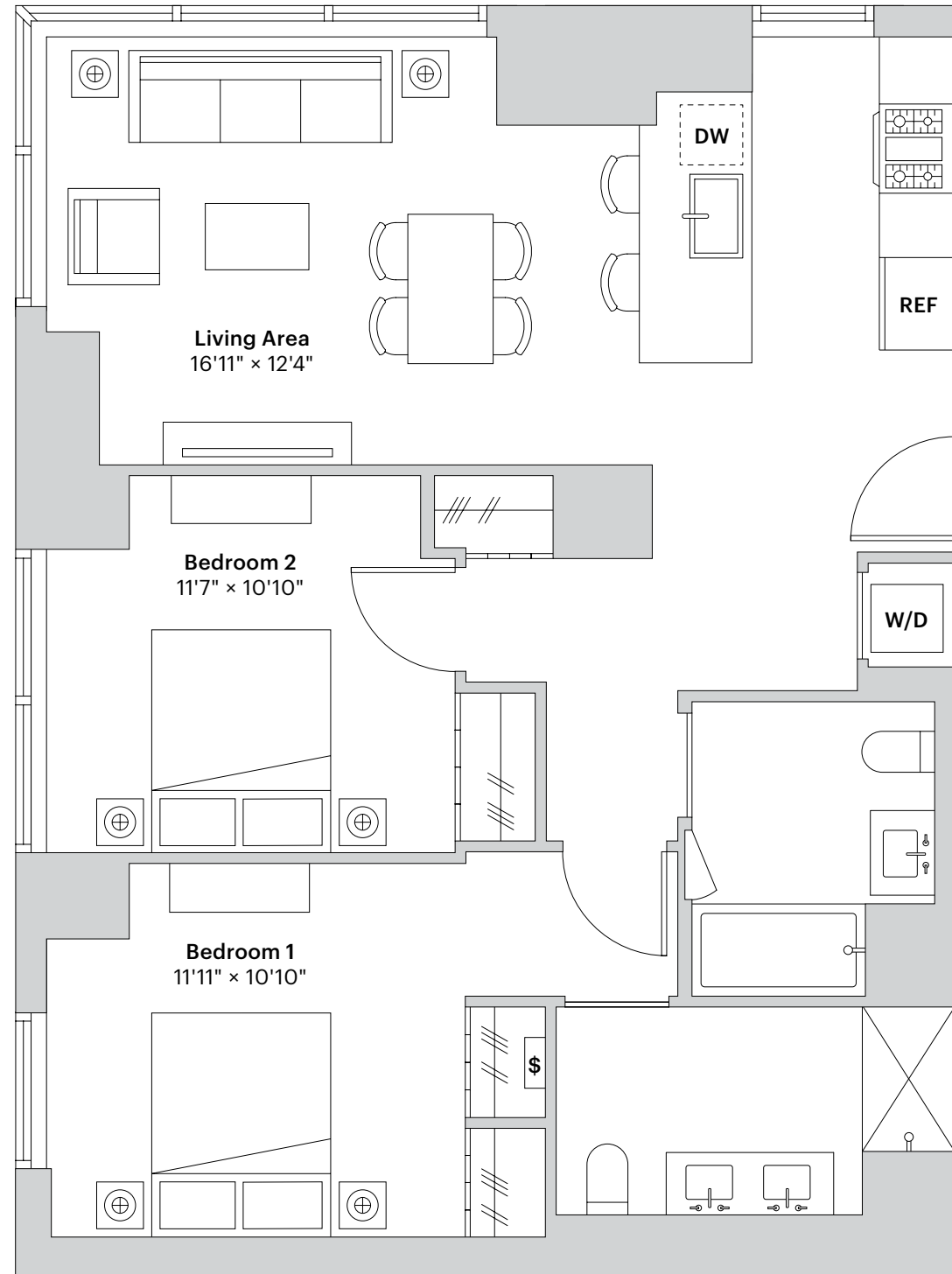
3ELEVEN

Residence Features

- Six-inch wide-plank white oak floors
- Solar shades in all major rooms
- In-residence washer and dryer
- Personal safe in all homes
- Individually controlled central heating and cooling
- Corner unit with two exposures
- Windowed kitchen
- Caesarstone countertop and backsplash
- Stainless steel counter-depth refrigerators with ice makers
- Stainless-steel gas range
- Bosch panelized dishwasher
- Kitchen island with counter seating
- Bathroom custom vanities with Caesarstone countertops
- Four-piece primary bathroom
- Bathroom full height custom medicine cabinets
- Full-height mirror and integral medicine lockboxes
- Primary bathroom with walk-in shower

Amenities

- 30,000-square-feet of staffed and programmed interior amenities, and over 30,000-square-feet of outdoor amenities spread across four levels
- Outdoor pool surrounded by comfortable lounges, semi-private cabanas, and landscaping
- Over 5,000 square feet of fitness, aerobic, well-being and meditative spaces spread across multiple private and public areas
- Two separate roof decks, the 42nd floor Sky Terrace and Sky Lounge and 7th floor lounge and private cabanas
- Two outdoor dog runs and a professionally staffed full-service pet care facility



All dimensions are approximate.

3elevennyc.com

311 11th Avenue
New York, NY 10001

leasing@3elevennyc.com
212 880 0311

DOUGLASTON
DEVELOPMENT

Nancy Packer
SIGNATURE MARKETING SERVICES